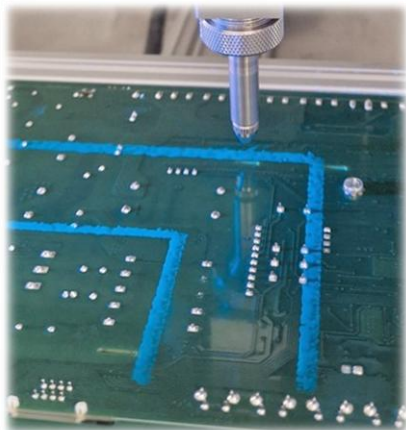


COATFLOW Solutions

Protecting your success

Mas INFO

SELECTIVE CONFORMAL COATING AND DISPENSING SOLUTIONS



CFMS25P

Size Ø x H:	1.12" x 3.34" (25mm x 185mm)
Weight:	0.68lb (310g)
Fluid Inlet:	1/8" NPT
Fluid Outlet:	Round Spray Nozzle
Mounting:	1/4-20UNC-2B
Maximum Fluid Pressure:	145psi (10bar)
Maximum control Pressure:	100psi (6.9bar)
Wetted parts:	SS, Teflon®, Delrin®
Cycle Rate:	Less than 600 cycles/minute
Material Viscosity Range:	1 – 50.000cps

PRECISION MICROSPRAY VALVE CFMS25P

THE MICRO SPRAY VALVES ARE DESIGNED FOR PRECISE SPRAY APPLICATIONS OF LOW VISCOSITY MATERIALS. AN EXTERNAL STROKE CONTROL (MICROMETER) MAKES IT EASY FOR THE OPERATOR TO FINE-TUNE FLUID FLOW. TOTAL CONTROL OF THE SPRAY CYCLE IS PROVIDED BY ADJUSTABLE FLUID FLOW AND PRECISE CONTROL OF PRE-SPRAY, ATOMIZING AIR AND POST SPRAY WITH **COATFLOW®** DISPENSING AND COATING SYSTEMS. MAINTENANCE IS MADE SIMPLE BY THE ELIMINATION OF TROUBLESOME AND COMPLEX INTERNAL CONTROL PARTS. DOWNTIME IS VIRTUALLY ELIMINATED WITH ONLY ONE SEAL TO REPLACE DURING NORMAL MAINTENANCE.

MICRO SPRAY VALVE COME WITH STAINLESS STEEL CONSTRUCTION IN FLUID HOUSING AND ANODIZED ALUMINUM IN AIR CYLINDER CONTROL PART. A FIELD REPLACEABLE DELRIN® SEAT PROVIDES POSITIVE SHUT OFF AND VERY LONG-LIFE CYCLES. THE COMPACT DESIGN AND EASY-MOUNT THREADED HOLE ALLOW FOR EASY INTEGRATION INTO AUTOMATED APPLICATIONS.

FEATURES

CONSISTENT SPRAY COVERAGE WIDTH FROM 3 UP TO 6 MM
LOW PRESSURE, LOW VOLUME ATOMIZED PROCESS
MICROMETER FOR STROKE CONTROL (FLOW)
NO OVERSPRAY
DOUBLE EFFECT CONTROL SYSTEM (OPEN AND CLOSE)
ADJUSTABLE FLOW CONTROL
LONG-LIFE CYCLES
OPTIMAL INTEGRATION IN CF440 AND CF395IL SERIES **COATFLOW** ROBOTS WITH TOTAL CONTROL FROM THE SOFT **COATCONTROLPRO**

COMPATIBLE WITH ALL COMMERCIALY AVAILABLE CONFORMAL COATINGS



CONFORMAL COATINGS, ACRYLICS, URETHANES, SILICONES, RTV, BI-COMPONENT MATERIALS, ETC.

CoatFlow



www.coatflow.com